

TOEIC Vocabulary Secrets Revealed

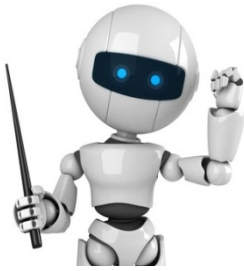
Oct 2011

Presented by:

Guy Cihi and Brent Culligan

Lexxica Corporation
2-7-8 Shibuya 5F
Shibuya-ku, Tokyo 150-0002

gcihi@lexxica.co.jp



TOEIC versus General English

1/3 of the words in both parts of every TOEIC test are NOT common words in General English.



What does this mean?

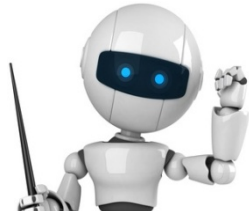
Students who study English with traditional 4-skills textbooks and readers will not develop fluency for 33% of the Very-High-Frequency words that commonly occur on every TOEIC test.



Our TOEIC Corpus

937,500 (75%) **words from**
high-grade TOEIC practice tests

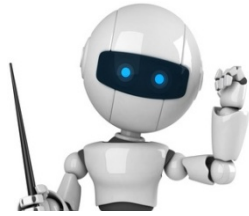
312,500 (25%) **words from**
actual TOEIC tests



Our TOEIC corpus

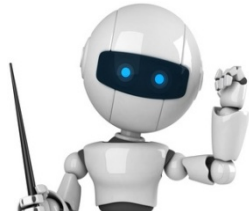
1,250,000 total words

14,652 different words



Our TOEIC corpus

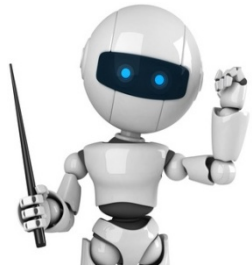
Just 6,480 different words constitute 99% of all word occurrences.



Our corpus analysis: TOEIC

Just 2,320 of the different words constitute 90% of all word occurrences.

Those 2,320 words are the absolutely essential Very-High-Frequency words of TOEIC.



Vocabulary examples letters "A" and "G"



Frequent only in the TOEIC corpus.



Frequent only in the General corpus.

	TOEIC
A	a
	ability
	able
	aboard
	about
	above
	abroad
	absence
	absent
	absolutely
	abstract
	accept
	acceptable
	acceptance

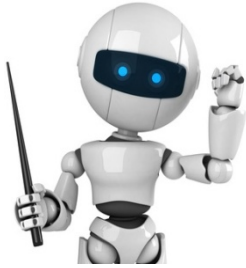
	General
	a
	abandon
	ability
	able
	about
	above
	abroad
	absence
	absolute
	absolutely
	absorb
	abuse
	academic
	accept

	TOEIC
G	gain
	gallery
	gallon + +
	game
	garage
	garbage
	garden
	gardener
	gas
	gasoline
	gate
	gather
	gender
	general

	General
	gain
	gall
	game
	gap
	garage
	garden
	gas
	gastric
	gate
	gather
	gaze
	gear
	gene
	general

**27% of high frequency
'A' words are exclusive
to TOEIC**

**33% of high frequency
'G' words are exclusive
to TOEIC**

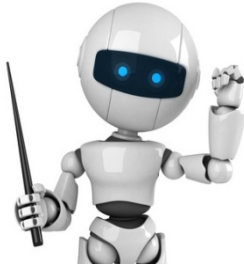


TOEIC: Esoteric Facts 1

TOEIC is an Item Response Theory Proficiency Test – not an English ability diagnostic test.

Students are scored along a bell-curve against the relative abilities of other students.

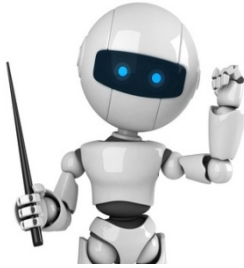
Students are not scored for their English language ability.



TOEIC: Esoteric Facts 2

Without difficult Items, Education Testing Service “ETS,” would be unable to maintain its bell-curve, and generate accurate scores.

ETS purposefully uses difficult vocabulary, and third or fourth definitions, as a way to create difficult Items (test questions.)

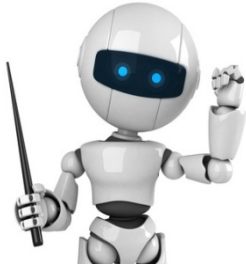


TOEIC: Esoteric Facts 3

ETS must regularly recycle most of its TOEIC questions or else their IRT scoring system will not work.

New questions are written by a small team of authors having low turnover amongst the members.

As a result, TOEIC vocabulary usage patterns are fairly predictable.

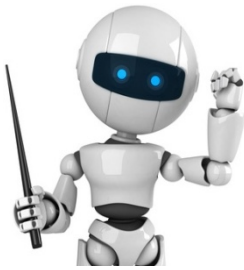


TOEIC: Esoteric Facts 4

ETS has never, and will never, issue a vocabulary guide for any of its major tests including: TOEIC, TOEFL, SAT and GRE.

Why?

Because tricky vocabulary is the best way for ETS to create the difficult questions it must have in order to give accurate scores.



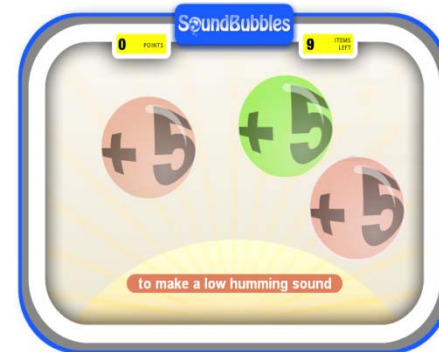
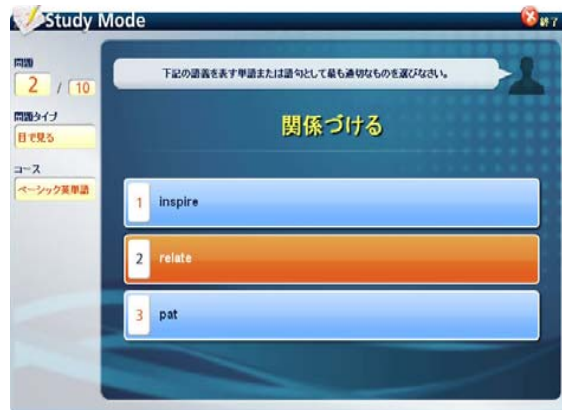
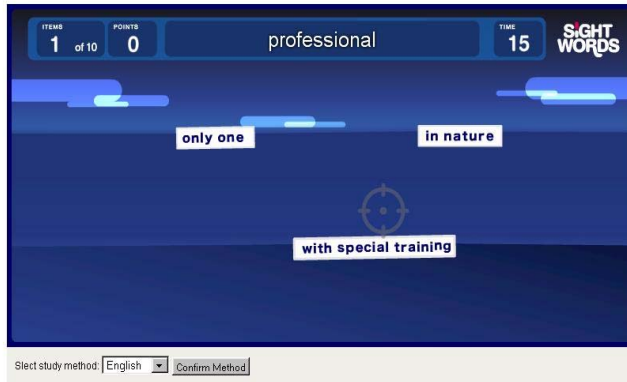
Our TOEIC Vocabulary Solution

Word Engine
powered by **lexica™**

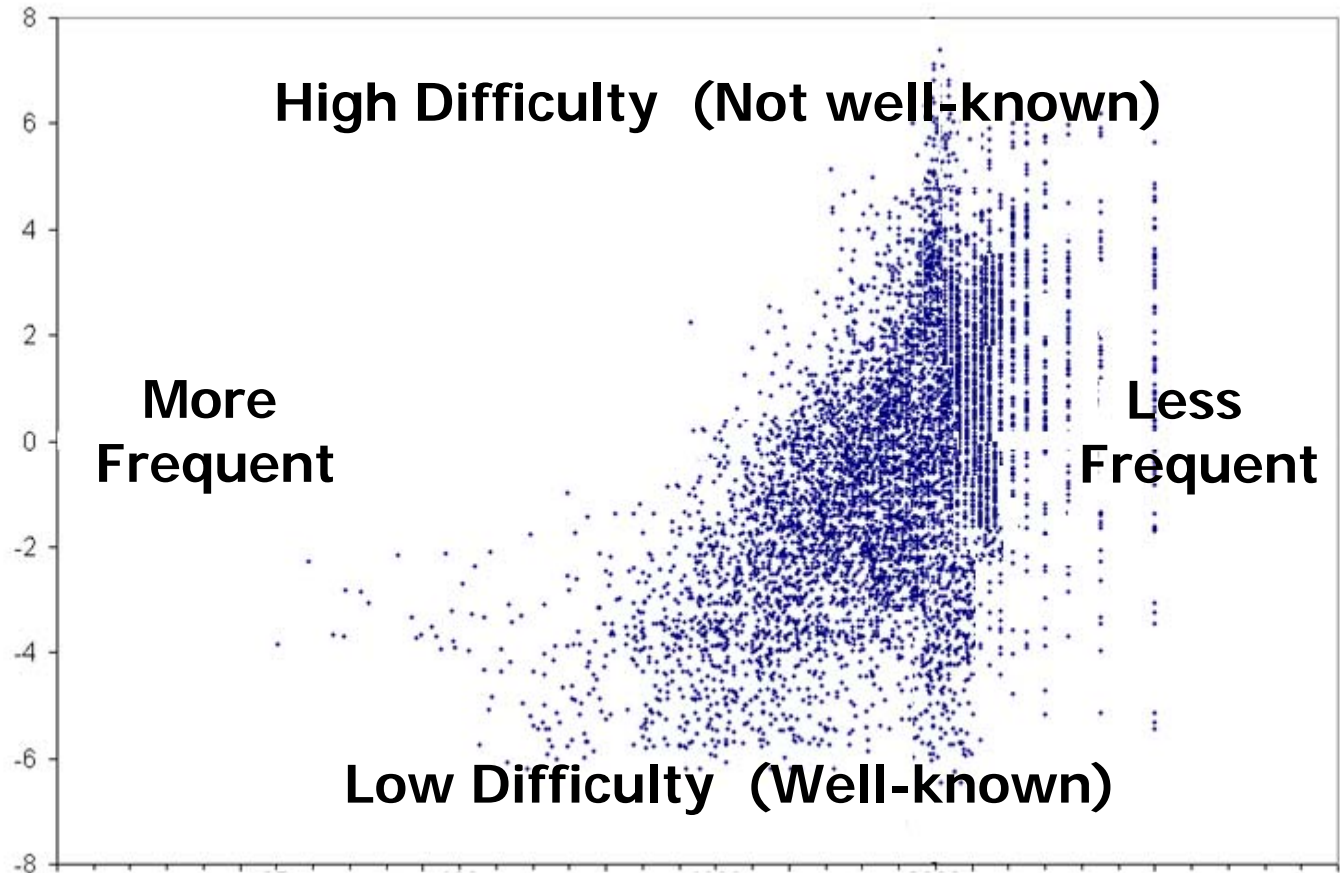
Word Engine

High Speed Vocabulary Learning System

SightWords - Focus on Visual Speed



Learn 3.5 new TOEIC words per minute



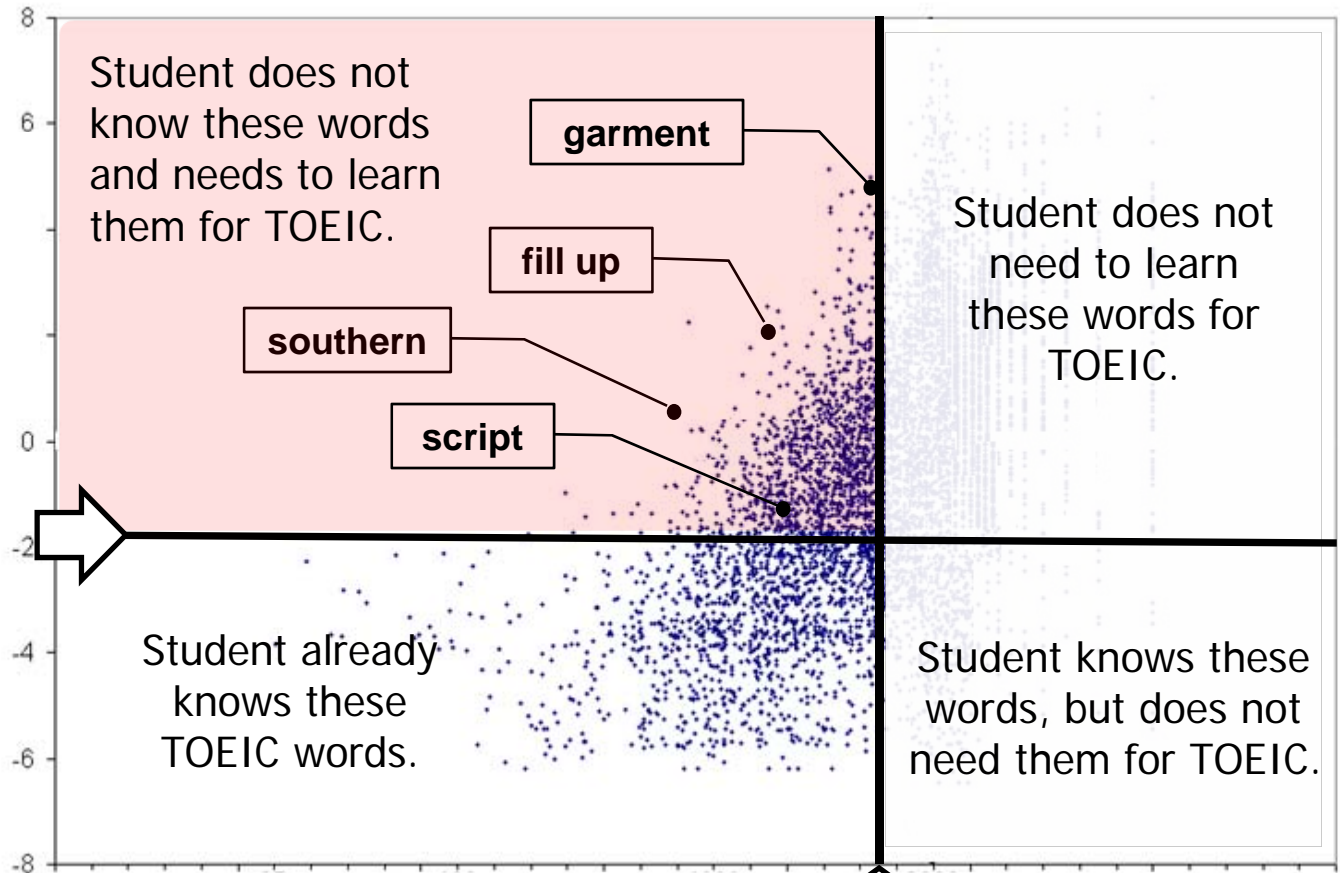
- Each dot represents one high frequency word in the TOEIC domain

Word Engine

High Speed Learning System

V-Check test identifies each user's known and unknown TOEIC words

V-Check finds MY starting point!



99% coverage point

Word Engine Quiz
Group: Business English II
Course: TOEIC
Student: Suzuki Mari / 1164926EC

Complete the missing word. (The first 1 letter is provided.)

1. two men went in o_____ directions.

Hint: 反対の

2. The government needs to reform the e_____ system.

Hint: 教育上の

3. Her u_____ goal was to become a lawyer.

Hint: 究極の

Word Engine Quiz
Group: Business English II
Course: TOEIC
Student: Suzuki Mari / 1164926EC

Circle the best possible word for the definition provided.

1. 記事

- a. article
- b. flame
- c. device

2. 初めは、生まれは、もともとは

- a. suddenly
- b. more
- c. originally

3. 表面

- a. carpenter
- b. chest
- c. surface

- Choose from six different types of quizzes.
- For multiple choice questions, each student's words are different but the answer key is the same.

Word Engine

High Speed Vocabulary Learning System

Partial list of Word Engine partners

- Cambridge University Press
- ABAX ELT
- Pearson Kirihara
- Alico Met Life Japan
- Iowa State University
- Meiji Gakuin University
- Aoyama Gakuin Women's Junior College
- Meiji University
- Hiroshima International University
- Nagoya University of Commerce & Business
- AEON



ちばる書店

桐原書店

Alico アリコジャパン

IOWA STATE
UNIVERSITY



AEON